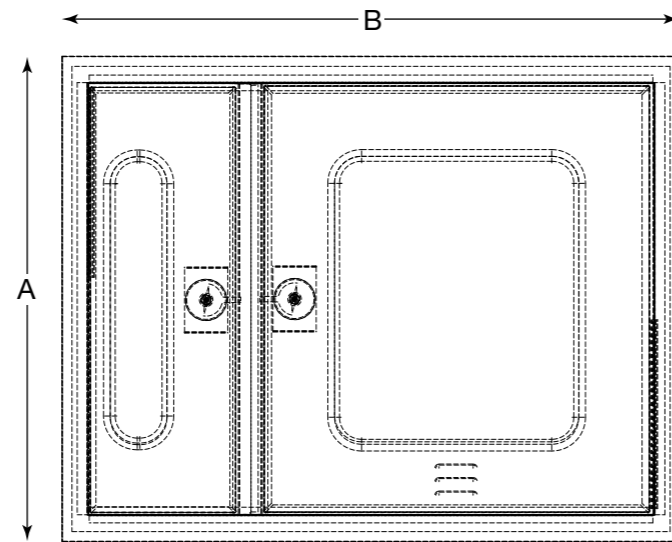


FIRE EXTINGUISHER AND HOSE RACK/REEL CABINETS SERIES 300

GENERAL DESCRIPTION

- **REDA Fire & Hazard Control Series 300 Combination Cabinets Are Offered in:**
 - Model C301: Fire Extinguisher and Swing-out Hose Reel
 - Model C302: Fire Extinguisher and Swing-out Hose Rack
- **Design:** Cabinets Have 2 Separate Sections, Each with a Hinged Access Door
- **Materials:** Cold-rolled 0.8 mm Steel (CS) or Optional Type #304 1.0 mm Stainless Steel (SS)
- **Glass:** 4.0 mm Thickness Clear Glass or Wired Glass with Rubber Beading
- **Louvers:** 3 Each, Machine Punched (Wall or Door)
- **Doors:** Single Doors with Piano Type Cold-rolled Steel Welded Hinges or Barrel Type Stainless Steel Hinges, Chrome Plated Flush Type Handle or Lever Type Handle with Key Lock

- **Finish:** Grit Blasted and Painted with Multiple Coats of Primer and Enamel or #4 or #8 Buffed Finish Stainless Steel



Model	Fire Righting Equipment	Dimensions			Glass
		A-Height	B-Width	C-Depth	
C301-CS-SR	Swing-out Hose Reel & Fire Extinguisher	800	1050	260	300 x 500
C301-CS-RC	Swing-out Hose Reel & Fire Extinguisher	800	1050	260	300 x 500
C301-CS-SM	Swing-out Hose Reel & Fire Extinguisher	800	1050	260	300 x 500
C301-CS-ST	Swing-out Hose Reel & Fire Extinguisher	800	1050	260	300 x 500
C301-SS-SR	Swing-out Hose Reel & Fire Extinguisher	800	1050	260	300 x 500
C301-SS-RC	Swing-out Hose Reel & Fire Extinguisher	800	1050	260	300 x 500
C301-SS-SM	Swing-out Hose Reel & Fire Extinguisher	800	1050	260	300 x 500
C301-SS-ST	Swing-out Hose Reel & Fire Extinguisher	800	1050	260	300 x 500
C302-CS-SR	Swing-out Hose Rack & Fire Extinguisher	850	1100	220	300 x 500
C302-CS-RC	Swing-out Hose Rack & Fire Extinguisher	850	1100	220	300 x 500
C302-CS-SM	Swing-out Hose Rack & Fire Extinguisher	850	1100	220	300 x 500
C302-CS-ST	Swing-out Hose Rack & Fire Extinguisher	850	1100	220	300 x 500
C302-SS-SR	Swing-out Hose Rack & Fire Extinguisher	850	1100	220	300 x 500
C302-SS-RC	Swing-out Hose Rack & Fire Extinguisher	850	1100	220	300 x 500
C302-SS-SM	Swing-out Hose Rack & Fire Extinguisher	850	1100	220	300 x 500
C302-SS-ST	Swing-out Hose Rack & Fire Extinguisher	850	1100	220	300 x 500

Note: All dimensions in mm.

GENERAL DESCRIPTION OF CABINETS

REDA Fire & Hazard Control series 100, 200, and 300 cabinet enclosures are used for protection and housing of fire extinguishers, hose reels, and hose racks in various building applications. The units are designed for interior areas and are offered in both standard dimensions and custom configurations.

REDA Fire & Hazard Control cabinets are available in numerous combinations of materials, latches, glass, and finish. Each unit is available with or without firefighting equipment or other purchaser required options.

CONSTRUCTION

Materials: Cabinets Available in Either Cold-rolled Steel ASTM A-36 or Type #304 Stainless Steel; Glass Window Standard in Each Door

Hinges: Piano Type Painted or Optional Barrel Type Stainless Steel

Latches: Available in Flush Chrome Type or Optional Lockable Handle Type with Key Lock

Finish: Available in Painted, Powder Coated, Optional Epoxy Coated, as Well as Stainless Steel; #4 Satin or #8 Mirror Finish

MOUNTING VARIATIONS

Cabinets Are Available in 4 Mounting Options:

- Semi-recessed (SR)
- Fully Recessed (RC)
- Surface Mounted (SM)
- Self-standing (ST)

FIREFIGHTING EQUIPMENT

Hose Reel, and Rack:

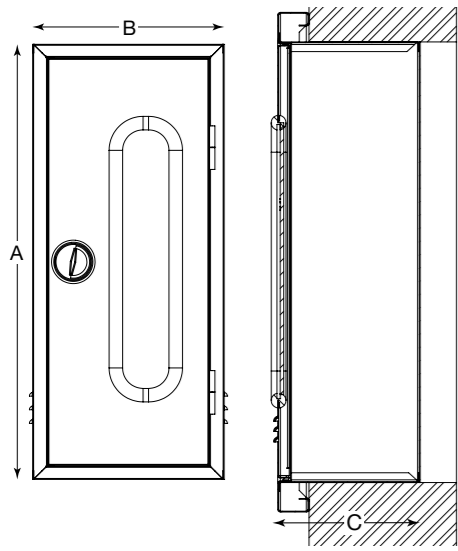
- Hose and Nozzle Standard
- Fire Extinguishers (Optional)

FIRE EXTINGUISHER • HOSE RACK • HOSE REEL CABINETS

CABINETS

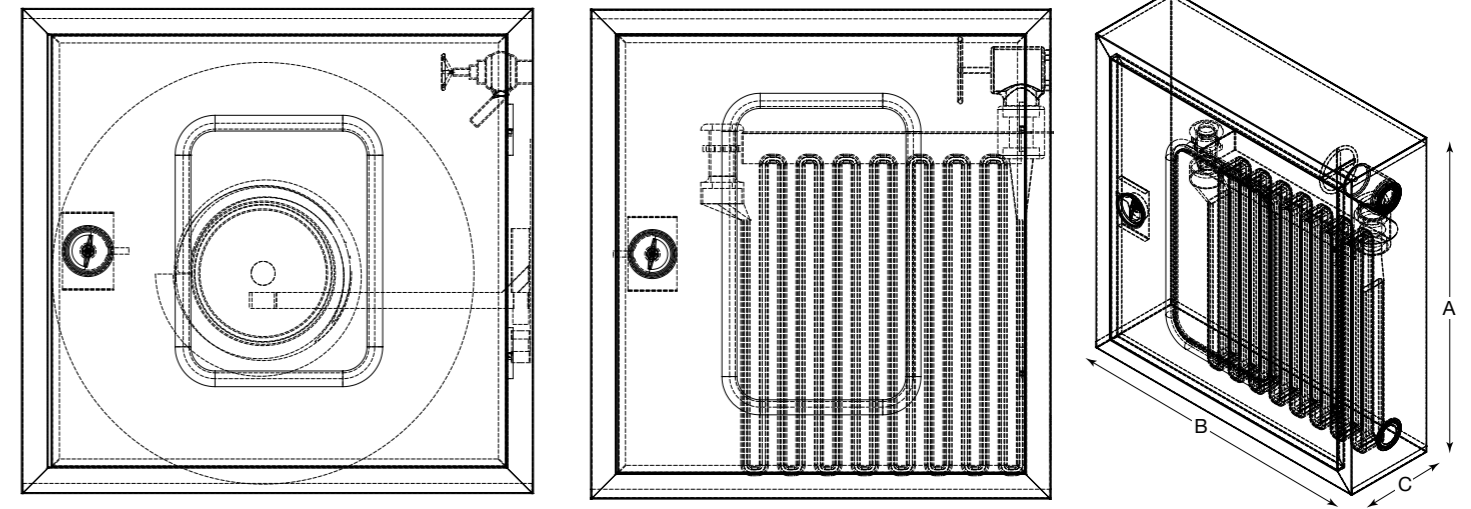
FIRE EXTINGUISHER CABINETS – SERIES 100

GENERAL DESCRIPTION



- **Materials:** Cold-rolled 0.8 mm Steel (CS) or Optional Type #304 1.0 mm Stainless Steel (SS)
- **Glass:** 4.0 mm Thickness Clear Glass or Wired Glass with Rubber Beading
- **Louvers:** 3 Each Machine Punched (Wall or Door)
- **Doors:** Single Doors with Piano Type Cold-rolled Steel Welded Hinges or Barrel Type Stainless Steel Hinges, Chrome Plated Flush Type Handle or Lever Type Handle with Key Lock
- **Finish:** Grit Blasted and Painted with Multiple coats of Primer and Enamel or #4 or #8 Buffed Finish Stainless Steel

HOSE REEL AND RACK CABINETS – SERIES 200



HOSE REEL ASSEMBLY

- **Hose Reel Assembly:** Swing-out L-shaped Arm, Steel Drum, Powder Coated, Manual Rewind
- **Hose:** 25 mm x 30 m (1" x 100') PVC Rubber and UV Inhibit 12 Bar Working Pressure
- **Nozzle:** Plastic 25 mm (1") Fog Type
- **Valve Control:** 38 mm (1.5") x 25 mm (1") Cast Brass Angle Valve and Swivel Inlet to Reel
- **Approvals:** CE, LPCB & BS EN-671-1: 2001

HOSE RACK ASSEMBLY

- **Type:** Swing-out L-shaped Arm, Pin Type, Single Person Operation at 100 GPM at 65 PSI (375 LPM/4.5 Bar)
- **Hose:** 38 mm x 30 m (1.5" x 100') Length, Single Jacket 100% Synthetic, 17 Bar Working Pressure, with Pin or Rocker Type Couplings
- **Nozzle:** 38 mm (1.5") Brass Adjustable Fog/Straight Stream with Shut-off
- **Valve control:** 38 mm (1.5") Cast Brass Angle Valve with Shut-off
- **Approvals:** UL Listed and FM Approved

Model	Fire Righting Equipment	Dimensions			Glass
		A-Height	B-Width	C-Depth	
C101-CS-SR	10# Dry Chemical or 10# CO2 Fire Extg	670	365	180	120 x 300
C101-CS-RC	10# Dry Chemical or 10# CO2 Fire Extg	670	365	180	120 x 300
C101-CS-SM	10# Dry Chemical or 10# CO2 Fire Extg	670	365	180	120 x 300
C101-CS-ST	10# Dry Chemical or 10# CO2 Fire Extg	670	365	180	120 x 300
C101-SS-SR	10# Dry Chemical or 10# CO2 Fire Extg	670	365	180	120 x 300
C101-SS-RC	10# Dry Chemical or 10# CO2 Fire Extg	670	365	180	120 x 300
C101-SS-SM	10# Dry Chemical or 10# CO2 Fire Extg	670	365	180	120 x 300
C101-SS-ST	10# Dry Chemical or 10# CO2 Fire Extg	670	365	180	120 x 300
C102-CS-SR	20# Dry Chemical or 2.5G Water Fire Extg	700	300	220	120 x 300
C102-CS-RC	20# Dry Chemical or 2.5G Water Fire Extg	700	300	220	120 x 300
C102-CS-SM	20# Dry Chemical or 2.5G Water Fire Extg	700	300	220	120 x 300
C102-CS-ST	20# Dry Chemical or 2.5G Water Fire Extg	700	300	220	120 x 300
C102-SS-SR	20# Dry Chemical or 2.5G Water Fire Extg	700	300	220	120 x 300
C102-SS-RC	20# Dry Chemical or 2.5G Water Fire Extg	700	300	220	120 x 300
C102-SS-SM	20# Dry Chemical or 2.5G Water Fire Extg	700	300	220	120 x 300
C102-SS-ST	20# Dry Chemical or 2.5G Water Fire Extg	700	300	220	120 x 300
C103-CS-SR	30# Dry Chemical	800	400	220	120 x 300
C103-CS-RC	30# Dry Chemical	800	400	220	120 x 300
C103-CS-SM	30# Dry Chemical	800	400	220	120 x 300
C103-CS-ST	30# Dry Chemical	800	400	220	120 x 300
C103-SS-SR	30# Dry Chemical	800	400	220	120 x 300
C103-SS-RC	30# Dry Chemical	800	400	220	120 x 300
C103-SS-SM	30# Dry Chemical	800	400	220	120 x 300
C103-SS-ST	30# Dry Chemical	800	400	220	120 x 300

Note: All dimensions in mm.

Model	Fire Righting Equipment	Dimensions			Glass
		A-Height	B-Width	C-Depth	
C201-CS-SR	Swing-out Hose Reel	760	800	260	120 x 300
C201-CS-RC	Swing-out Hose Reel	760	800	260	120 x 300
C201-CS-SM	Swing-out Hose Reel	760	800	260	120 x 300
C201-CS-ST	Swing-out Hose Reel	760	800	260	120 x 300
C201-SS-SR	Swing-out Hose Reel	760	800	260	120 x 300
C201-SS-RC	Swing-out Hose Reel	760	800	260	120 x 300
C201-SS-SM	Swing-out Hose Reel	760	800	260	120 x 300
C201-SS-ST	Swing-out Hose Reel	760	800	260	120 x 300
C202-CS-SR	Swing-out Hose Rack	760	800	200	120 x 300
C202-CS-RC	Swing-out Hose Rack	760	800	200	120 x 300
C202-CS-SM	Swing-out Hose Rack	760	800	200	120 x 300
C202-CS-ST	Swing-out Hose Rack	760	800	200	120 x 300
C202-SS-SR	Swing-out Hose Rack	760	800	200	120 x 300
C202-SS-RC	Swing-out Hose Rack	760	800	200	120 x 300
C202-SS-SM	Swing-out Hose Rack	760	800	200	120 x 300
C202-SS-ST	Swing-out Hose Rack	760	800	200	120 x 300

Note: All dimensions in mm.