



Sepura plc

9000 Cambridge Research Park

Beach Drive

Waterbeach

CAMBRIDGE

CB25 9TL

Tel: +44 (0)1223 876000

Fax: +44 (0)1223 879000

For a full list of worldwide distributors, visit sepura.com/partners

sepura

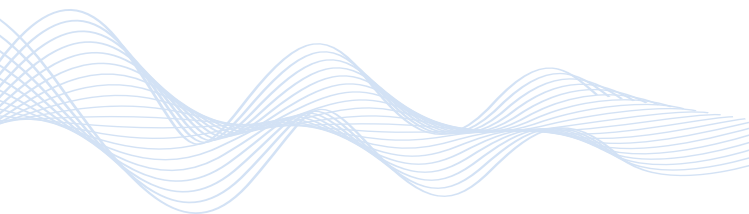
sepura.com

© SEPURA PLC 0001_0916_V6_English



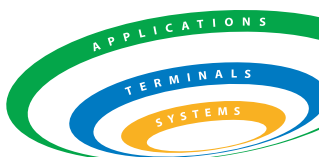
Terminals**Insight**

QUICK REFERENCE GUIDE



sepura

Going further in critical communications



The Sepura Group is a global leader in the design, manufacture and supply of digital radio products, systems and applications developed specifically for business and mission critical communications.

Founded in the UK in 2002, Sepura expanded rapidly across the world with a network of regional partners selling and providing local support for its products, and quickly achieved the status of market leader in over 30 countries.

The Sepura Group now includes Teltronic S.A.U., the Spanish Professional Mobile Radio (PMR) company; and Portalify, the Helsinki applications developer. Operating globally, and with a combined turnover of over €180m, the group has a product portfolio with the unique ability to offer TETRA, DMR, P25 and LTE system solutions.

These wide-ranging and complete solutions enable public safety organisations and users in commercial sectors – including transport, utilities, oil and gas, manufacturing, mining, hospitality and construction – to address the communications challenges they face on a daily basis.

To find out more, please visit sepura.com



THE QUEEN'S AWARDS
FOR ENTERPRISE:
INTERNATIONAL TRADE
2015

CONTENTS

TETRA RADIOS

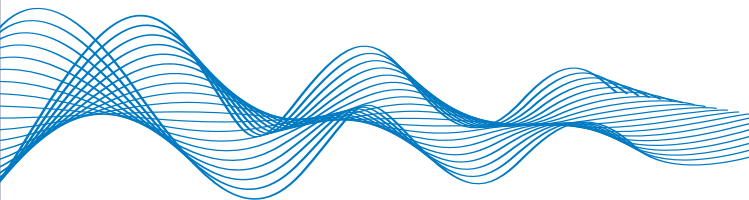
- 5 Hand-portables
- 12 Mobile
- 13 Consoles
- 15 Vehicular solution
- 16 Onboard equipment for transportation
- 20 Radio board
- 21 Fleet management

DMR RADIOS

- 23 Hand-portables
- 25 Mobile
- 26 Programming tool

ACCESSORIES

- 27 TETRA & DMR accessories





SC20 SERIES

HAND-PORTABLES

SC20 series next generation smart hand-portable radios are resilient, intelligent and durable. Highly versatile, they combine the mission critical voice, status, messaging and data capabilities of TETRA with a second high-speed data bearer.

Enhanced application capability supports interaction with Bluetooth wireless body-worn accessories, back-end databases and locally stored moving map data while a UNIQUE notification bar gives instant access to five favourite features, indicates missed events, and alerts the user to any major changes of state, such as speaker mute.

Submersible, waterproof and dustproof, the SC20 series boasts IP66, 67 and 68 environmental protection ratings and an easy-clean design, allowing the radios to be rinsed in running water.

- › Broadband-ready: UNIQUE second data bearer allows data access via a broadband data network, such as Wi-Fi or, in the future, LTE
- › Class 3 high-power TETRA RF transmission and exceptional receive sensitivity for extended operational range
- › Powerful 2W audio with enhanced fidelity ensures clear voice communication, even in high-noise environments
- › 2.4" high-resolution QVGA screen anticipates increased apps usage and allows easy viewing in all light conditions
- › Enhanced apps capability, via SDAs
- › UNIQUE notification bar
- › UNIQUE water-porting technology maintains clear communication even in the harshest of weather
- › Integrated RFID tag
- › DMO repeater
- › Super-sensitive GPS capability
- › Glove-friendly design with haptics



STP9000

HAND-PORTABLE

Tough, resilient and packed with features, the STP9000 helps you tackle the most arduous workday challenges.

Dustproof, waterproof and submersible, the full-keypad STP9000 boasts powerful audio, exceptional battery life and safety-enhancing features such as Wake-on-Alarm, which switches the radio on and initiates an emergency call with one touch of a button.

Haptic technology produces a physically detectable response to the press of a key and the 'Twist and Zoom' feature allows images to be viewed full-screen when the radio's orientation is changed.

- › Class 3L TETRA RF power
- › IP66 and 67 environmental protection
- › Large colour screen with 'twist and zoom' feature
- › Integrated Bluetooth option
- › Integrated RFID tag
- › DMO repeater
- › Super-sensitive GPS capability
- › SDA radio apps, WAP and status-triggered functions
- › Optional Man-Down alarm
- › Coloured bezel options



STP9100

HAND-PORTABLE

Dustproof, waterproof and submersible, the STP9100 provides the latest smart technology to users who need a high-specification, reliable radio but prefer a streamlined user interface.

Combining extreme ruggedness with powerful audio and exceptional battery life, it also boasts safety-enhancing features such as Wake-on-Alarm, which switches the radio on and initiates an emergency call with one touch of a button.

- › Class 3L TETRA RF power
- › IP66 and 67 environmental protection
- › Large colour screen with 'twist and zoom' feature
- › Integrated Bluetooth option
- › Integrated RFID tag for easy asset tracking
- › DMO repeater
- › Super-sensitive GPS capability
- › SDA radio apps, WAP and status-triggered functions
- › Optional Man-Down alarm
- › Coloured bezel options



STP9200

HAND-PORTABLE

Dustproof, waterproof and submersible, the STP9200 combines extreme ruggedness with powerful audio and RF in an entry-level radio.

With powerful audio and exceptional battery life, it also boasts safety-enhancing features such as Wake-on-Alarm, which switches the radio on and initiates an emergency call with one touch of a button. A reduced keypad makes it easy to operate, even with gloved hands.

- › Class 3L TETRA RF power
- › Monochrome screen
- › IP67 environmental protection
- › Integrated RFID tag
- › DMO repeater
- › Super-sensitive GPS capability
- › Coloured bezel options



COVERT

Operationally proven over millions of hours by users worldwide, our range of covert accessories includes earpieces, carrying solutions and control devices.

The Sepura Dynamic Controller connects GSM and TETRA devices to Sepura covert accessories. With noise-eliminating technology, wireless control and secure Bluetooth, it allows dynamic swapping between devices with a single button press of the discreet remote control unit (RCU). It supports all standard induction covert earpieces, as well as off-the-shelf headphones, and can be used as a GSM-only covert solution.

Providing immunity from electro-magnetic (EM) interference, the NN5 covert range delivers outstanding speech quality in surroundings where standard inductive earpieces become inoperable due to excessive EM noise.

Find out more: www.seapura.com

STP8X000

INTRINSICALLY SAFE HAND-PORTABLE

The loudest Intrinsically-Safe TETRA radio on the market, the full-keypad STP8X000 meets the exacting requirements of the IECEx/ATEX standard v6.

Built to withstand the very harshest working conditions, this award-winning radio has a large, hi-resolution display for crystal-clear viewing in all light conditions, class-leading audio clarity and enhances worker safety through features such as Lone Worker and Man-Down alarms.

Hot-swap technology allows Sepura-approved, IS-certified, Nexus-based headsets to be attached or removed in hazardous areas.

- › V6 IECEx/ATEX-approved
- › IP67 rating (dustproof, waterproof, submersible)
- › Long battery life
- › Bluetooth connectivity
- › Optional GPS and Man-Down alarm
- › MicroSD card slot
- › SDA radio apps, WAP and status-triggered functions



STP8X100

INTRINSICALLY SAFE HAND-PORTABLE

Offering all the functionality of the STP8X, the reduced-keypad STP8X100 has been specially designed for use with heavily gloved hands and features well-spaced keys for quick, easy access to all the radio's features.

- › V6 IECEx /ATEX-approved
- › IP67-rated (dustproof, waterproof, submersible)
- › Long battery life
- › Bluetooth connectivity
- › Optional GPS and Man-Down alarm
- › MicroSD card slot
- › SDA radio apps, WAP and status-triggered functions



SRG3900

MOBILE RADIO

With a class-leading 10 Watts of RF power, and the most proven gateway and repeater technology on the market, the SRG3900 TETRA mobile extends communication into areas otherwise beyond network coverage.

An 8W audio drive provides loud, clear audio and – uniquely – the integral GPS module tracks both GPS satellites and the Glonass satellite network, working with the latest SBAS differential GPS support and CW anti-jamming technology to provide a greater degree of accuracy and security.

- › IP54 environmental protection
- › 10W RF power provides the greatest operational range of any TETRA radio
- › Gateway
- › DMO repeater with call participation
- › SDA radio apps, WAP and status-triggered functions
- › Air Interface and end-to-end encryption options
- › Support for up to six accessories
- › Dual remote console support
- › Air-approved and marine variants



SEPURA COLOUR CONSOLE

The Sepura Colour Console (SCC) delivers an enhanced audio and visual experience. Flexible fitting options allow installation up to 30m from the SRG3900 gateway.

- › Large, high-resolution colour display with night mode to reduce glare
- › 18 soft keys
- › Up to three audio accessories per console
- › Front accessory connector allows hot-swapping
- › Intelligent volume control for independent control of each accessory type
- › Range of language keymats
- › Coloured bezel options

SCC variants

SCC: STP-style UI (two context keys), IP54 – ideal for vehicle/office environments

SCC2: STP-style UI (two context keys), IP67 – ideal for exposed environments

SCC3: SC20-style UI (three context keys), IP54 – ideal for vehicle/office environments

SCC3 (IP67): SC20-style UI (three context keys), IP67 – ideal for exposed environments



HBC

HANDSET-BASED CONSOLE

With compact, ergonomic design and outstanding audio, the HBC series combines the functionality of a traditional radio console with a telephone handset. Resistant to dust and water ingress, its IP55 rating makes it suitable for use in semi-exposed locations.

Uniquely, dual microphones allow the HBC to be configured as a traditional handset or a fist mic; independent controls allow volume levels to be individually set for the earpiece and the main SRG speaker. Flexible installation options allow the HBC to be fitted up to 30m from the SRG3900 gateway.

- › Large, high-resolution colour display with night mode
- › AMPS-compatible magnetic cradle, with automatic off-hook detection
- › Range of language keymats
- › Coloured bezel options

HBC variants

HBC2: STP-style UI (two context keys)

HBC3: SC20-style UI (three context keys)



MVC-6000

VEHICULAR SOLUTION

Ideal for troubleshooting in the field or providing accurate data to improve remote decision making, the MVC-6000 provides a range of efficiency-boosting onboard media and applications:

- › radio communications
- › incident and operations management
- › GPS navigation
- › CCTV with local and remote recording
- › access to databases and centralised documents
- › web navigation
- › email management
- › licence plate identification

The MVC-6000 integrates narrowband and broadband radio technologies (TETRA, Wi-Fi, LTE) to allow resource optimisation, fleet management and access to shared information, streamlining workflow and reducing incident response times.



RTP-300

ONBOARD EQUIPMENT

Compact and extensively proven on trams, light rail networks and railways worldwide, the RTP-300 onboard equipment is fully compliant with EN50155 and EN45545 railway regulations and offers:

- › Connection with public address and intercom systems
- › GPS vehicle location
- › Alarm and event management
- › Interaction with other onboard subsystems via digital inputs/ outputs

Compatible with a range of voltages, the RTP-300 also offers a wide range of installation options.



RTP-603

ONBOARD EQUIPMENT

Fully compliant with EN50155 and EN45545 railway regulations, RTP-603 onboard equipment is a powerful tool that provides a range of advanced, integrated functionality:

- › Management of voice and data between drivers and control center
- › Connection with public address and intercom systems
- › Connection with the internal vehicle network, TCMS
- › GPS- and beacon-based vehicle location

Compact and extensively proven on trams, light rail networks and railways worldwide, the RTP-603 offers 100% availability and full redundancy of the power supply, radio equipment and communications rack.

It also offers a wide range of installation options and is compatible with a range of voltages.



RTP-S

ONBOARD EQUIPMENT

EN50155 and EN45545 compliant, RTP-S onboard equipment is specially designed for data management in railway environments.

Part of our TETRA solution for railway signalling, the RTP-S transmits vital data such as location, speed restrictions, braking points along the route or movement authorities, managed by the onboard application.

- › Wide range of supply voltages
- › Data services TETRA PDP and CMD
- › Flexibility of protocols and interfaces
- › Optional broadband Wi-Fi connectivity for transmission of large quantities of data



RCC-3000 CONSOLE

Highly customizable and with an 8" touch screen, the RCC-3000 user interface is fully compatible with the RTP series of onboard equipment.

Key features include:

- › EN50155/EN45545 compliance
- › Projected capacitive touchscreen
- › IP65 environmental protection
- › Day/night sensor
- › Wide range of ports and connectivity options
- › Customisable interface



The RCC-3000 can also be integrated with our CCTV solutions, allowing the driver to view the images from onboard cameras and manage radio communications from a single interface.

OTHER CONSOLES

We have a range of consoles in various formats, to facilitate ergonomic layout in the cabin and an optimal use of space.

These consoles offer:

- › an LCD, providing the driver with operational information
- › LED indicators showing service status
- › a vandalproof, touch-sensitive keypad
- › audio accessories (handset, microphone, speaker)

SRB

RADIO BOARD

A slim-line, high performance, voice- and data-capable TETRA radio board, the SRB provides a customisable TETRA engine to meet the requirements of third-party solution providers.

Supporting two independent serial peripheral equipment interfaces, it allows transmission of information using voice, multi-slot packet data, circuit-mode data, status or SDS messaging services.

- › 1.8W RF power for enhanced coverage in TMO and DMO
- › Voice interface allows apps to implement voice calls
- › Air Interface encryption and authentication options



RADIO MANAGER 2

A comprehensive fleet management tool, Radio Manager 2 allows you to simultaneously program up to 32 radios per programming client application, enabling rapid updates across your fleet.

With automatic terminal detection and programming based on radio identity, radios can be programmed at remote locations, providing maximum flexibility and reducing operational costs.

- › Intuitive user interface
- › Automatic programming and software upgrades
- › Third-party interface for fleet map imports
- › User-configurable access levels
- › Mapping and recording of ISSI and TEI association
- › Multiple languages
- › SQL database





SBP8000

HAND-PORTABLE

Secure, robust and reliable, the SBP8000 gives outstanding performance no matter how challenging the environment.

With full keypad, colour screen and intuitive user interface, the SBP8000 is ideal for users who require a wide range of functionality. Waterproof and dustproof (IP67-rated), it offers a rugged body, high-quality audio and exceptional battery life.

The SBP8000 is also DMR Tier III-compatible upon purchase of a software licence.

- › High RF power: 1-4W (UHF) and 1-5W (VHF)
- › VOX gives easy, hands-free operation
- › GPS, Man-Down and Lone Worker applications enhance user safety
- › End-to-end encryption prevents eavesdropping



The SBP series is for use in Europe, Australia and New Zealand

The SEP series is for use in USA and Canada

The SCP series is for use in the rest of the world

SBP8300

HAND-PORTABLE

Perfect for use with gloved hands, the SBP8300 has no keypad or display and gives quick and easy access to basic functionality. Waterproof and dustproof (IP67-rated), it offers a rugged body, high-quality audio and exceptional battery life.

- › High RF power: 1-4W (UHF) and 1-5W (VHF)
- › VOX gives easy, hands-free operation
- › GPS, Man-Down and Lone Worker applications enhance user safety
- › End-to-end encryption prevents eavesdropping
- › Coloured inserts allow differentiation
- › Voice announcements notify user of channel changes



The SBP series is for use in Europe, Australia and New Zealand

The SEP series is for use in USA and Canada

The SCP series is for use in the rest of the world

SBM8000

MOBILE RADIO

Available in both UHF and VHF versions, the SBM8000 is a fully-featured mobile radio. It offers outstanding audio quality and is DMR Tier III-compatible upon purchase of a software licence.

- › High RF power: up to 40W (UHF) and up to 45W (VHF)
- › GPS and Lone Worker applications enhance user safety
- › End-to-end encryption prevents eavesdropping
- › Range of mounting options for desk or vehicle use
- › Supplied with mounting bracket and standard fist mic



The SBM series is for use in Europe, Australia and New Zealand

The SEM series is for use in USA and Canada

The SCM series is for use in the rest of the world

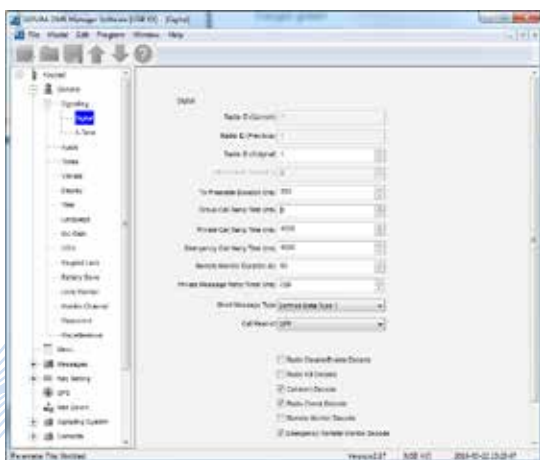
DMR MANAGER

PROGRAMMING TOOL

A dedicated programming tool with a user-friendly interface, DMR Manager allows quick and easy programming of Tier II and Tier III radios and repeaters.

Connected via USB for radios and via Ethernet for repeaters, DMR Manager requires no database and facilitates:

- › firmware upgrades
- › customisation of radio UI to your chosen language
- › upload of voice announcements
- › import and export to CSV



ACCESSORIES

TETRA/DMR

Robust and reliable enough to meet your toughest operational challenges, our versatile range of accessories allows you to configure your terminals for optimal comfort and performance – allowing for customisation and a product that is perfectly tailored to your needs.

An industry-leading range of TETRA speaker microphones provides IP67 environmental sealing for outstanding all-weather performance and superlative audio, no matter how harsh the conditions.

- › Wide range of remote speaker microphones
- › Ear hangers and hands-free kits
- › Carrying solutions
- › Support for hand-held, vehicle, motorcycle and marine products

Find out more: www.seapura.com

DMR



TETRA



TETRA

